



SFI 14-3 Blower Restraint

Toll Free Tech

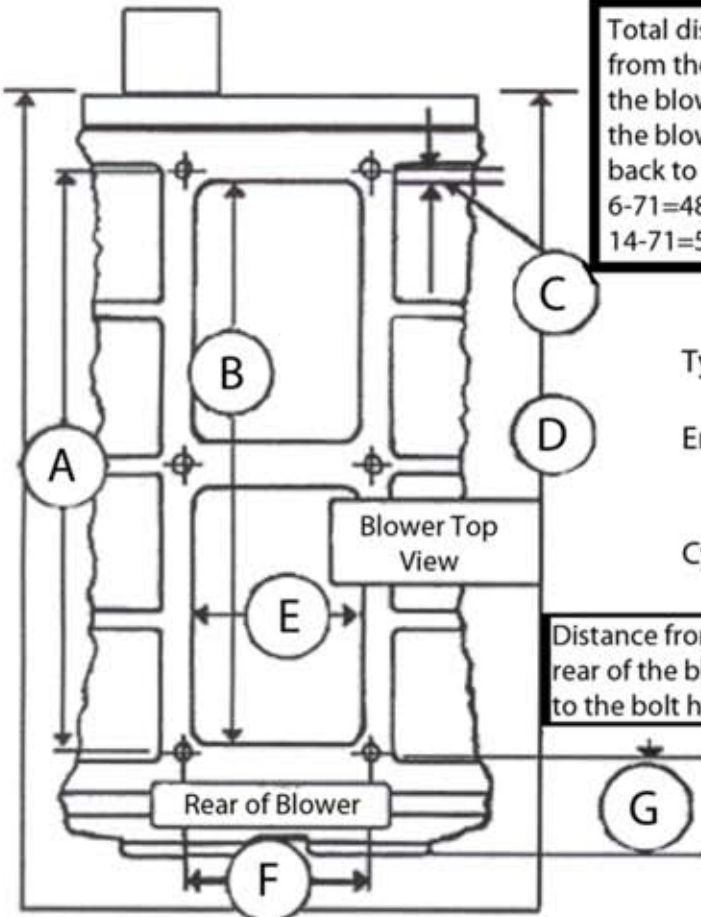
800.576.7661

www.DragParts.com



MADE IN USA

Total distance from the front of the blower around the blower and back to the front.
 6-71=48" 8-71=50"
 14-71=56" or 60"



Name: _____

Phone: _____

Email: _____

Type of Car: _____

Engine Manufacture: _____

KB, TFX, Chevy, Ford, etc

Cylinder Heads: _____

Blower Size: 4-71 | 6-71 | 8-71 | 10-71 | 12-71 | 14-71

Please Circle One

Blower Manufacture: _____

SSI, Mooneyham, B&M, BME, Littlefield, Kobelco, etc

All of these we need the Manufacture & Model

Intake Manifold: _____

Injector: _____

Starter Plate: _____

Comments: _____

A: _____ E: _____

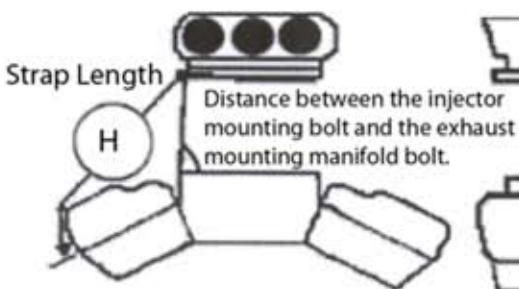
B: _____ F: _____

C: _____ G: _____

D: _____

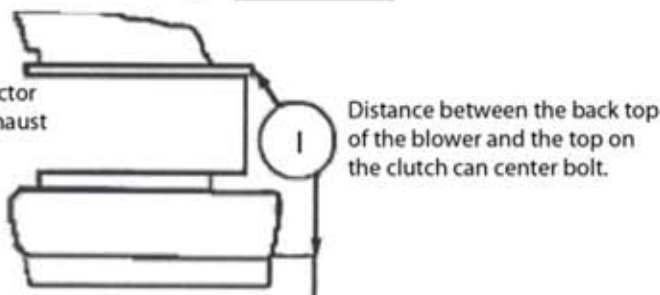
H: _____

I: _____



Strap Length

Distance between the injector mounting bolt and the exhaust mounting manifold bolt.



Distance between the back top of the blower and the top on the clutch can center bolt.

**After Completed
Please Fax or
Email to:**

562.693.9553

Sales@DragParts.com

**After Completed Please
Fax Or Email Form To:
562.693.9553
Sales@DragParts.com**

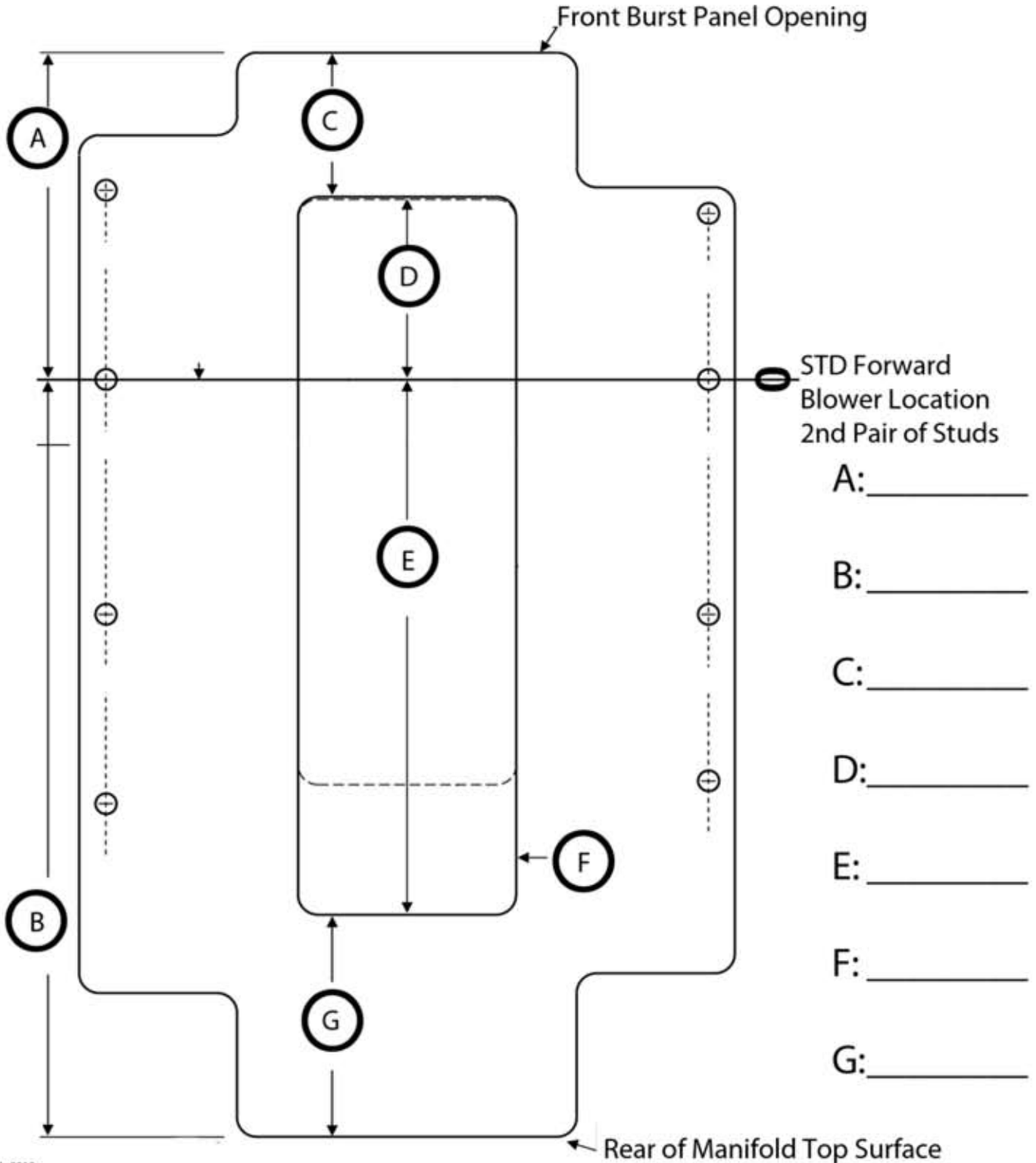
SFI 14-3 Blower Restraint

**Toll Free Tech
800.576.7661
wwwDragParts.com**

Name: _____

Sales Order #: _____

Top Opening intake Manifold for SFI 14.3



**After Completed Please
Fax or Email Form To:
562.693.9553
Sales@DragParts.com**

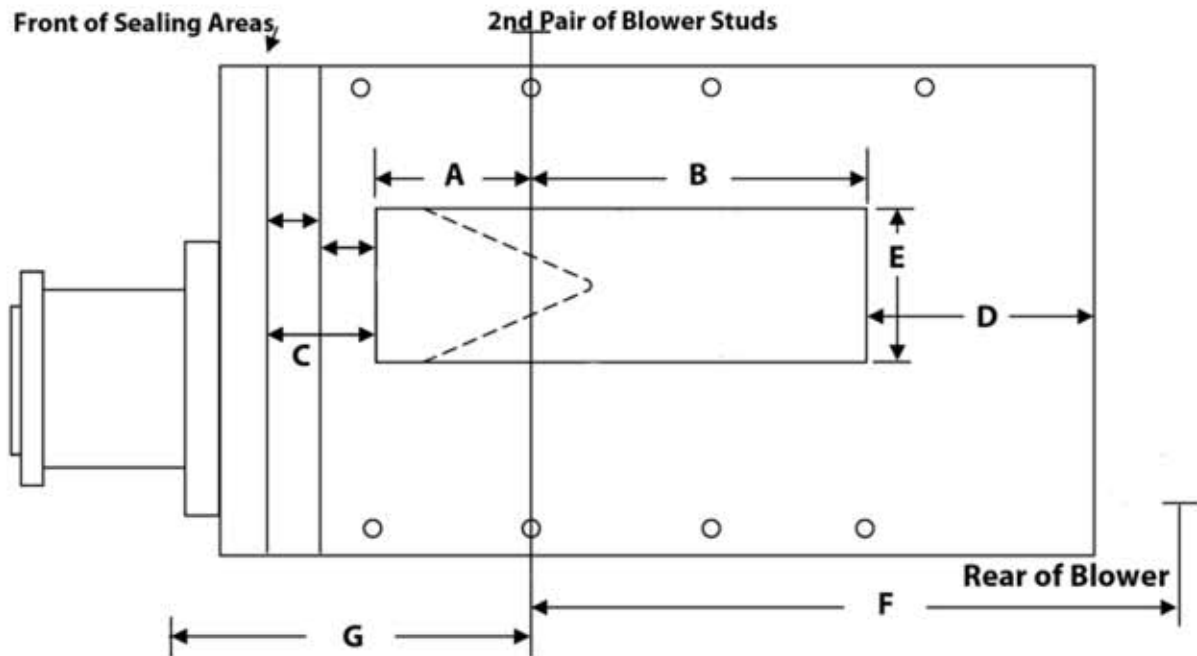
SFI 14-3 Blower Restraint

**Toll Free Tech
800.576.7661
www.DragParts.com**

Name: _____

Bottom Opening Blower for SFI 14.3

Sales Order #: _____



A: 2nd Pair of Studs to Front of Opening _____

B: 2nd Pair of Studs to Rear of Opening _____

C: Front Case Area Sealing Width _____

D: Rear Case Area Sealing Width _____

E: Opening Width _____

F: Rear of Blower (absolute rear of blower) _____

G : Front of Snout Mounting Surface _____